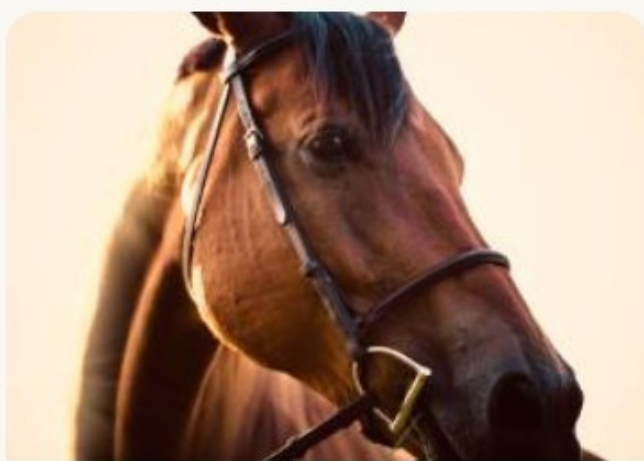


# PROTIERRA PARTNERS NEIGHBORHOOD GUIDE



Sayulita



San Pancho  
(San Francisco)



Higuera Blanca



Punta De Mita  
(Punta Mita Resort)

## NATURE

### Topography

Flat urban center surrounded by ocean and tropical deciduous and semi-deciduous jungle

### Coast

Sheltered bay plus 11 open ocean beaches

### Topography

Flat urban center surrounded by ocean and tropical deciduous and semi-deciduous jungle

### Coast

Open ocean beach

### Topography

Flat urban center surrounded semi deciduous forest, xeric shrubland (arid)

### Coast

Open ocean beach

### Topography

Flat urban center surrounded by ocean and semi-deciduous forest, xeric shrubland (arid)

### Coast

Open ocean beaches

### Gated Punta Mita Resort

Fully manicured golf and landscaping.



PROTIERRA  
PARTNERS



[protierra.realestate](https://www.protierra.realestate)

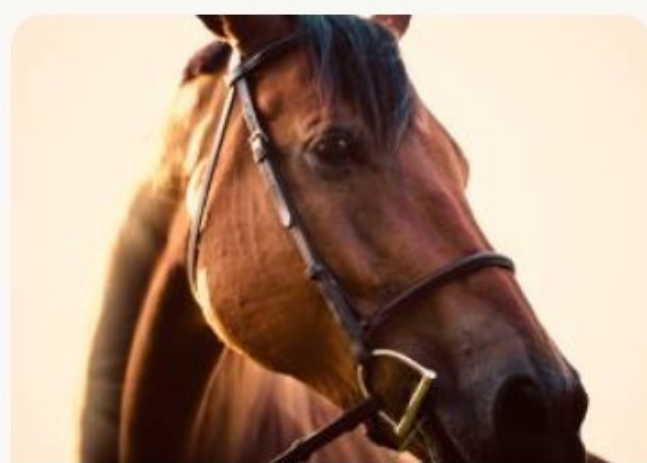
[protierrapartners.com](https://www.protierrapartners.com)  
(322) 294.2040  
Av. Revolución #56  
Sayulita, Mexico 63734



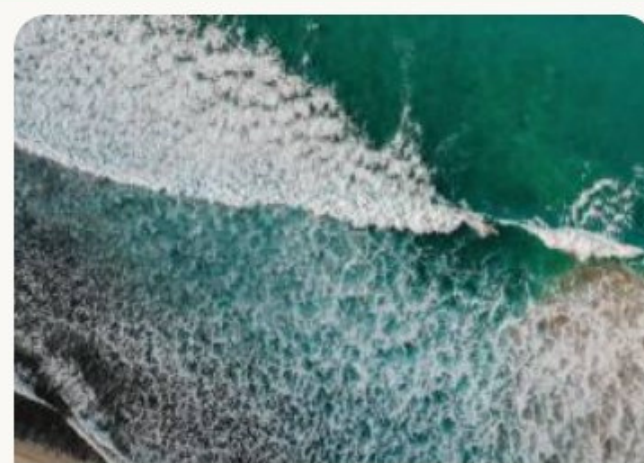
# PROTIERRA PARTNERS NEIGHBORHOOD GUIDE



Sayulita



San Pancho  
(San Francisco)



Higuera Blanca



Punta De Mita  
(Punta Mita Resort)

## CULTURE

### Vibe

Active, festive

### Population

8,000

### Key words

Trendy, fine dining, shopping,  
surfing, yoga, health, wellness,  
music, organic food store, dog-  
loving

### Vibe

Laid back

### Population

5,000

### Key words

Bohemian, eco activism, close  
knit, polo / equestrian, pro-kids

### Vibe

Rural feel, laid back

### Population

2,000

### Key words

Quiet, rural feel, down-to- earth,  
quiet beach, nature lovers, hub  
between Sayulita and Punta de  
Mita.

### Vibe

Pueblo: laid back; Puna Mita:  
exclusive / safe.

### Population

4,000

### Key words

Resorts, private, secure, golf,  
restaurants, beach



PROTIERRA  
PARTNERS



[protierra.realestate](https://www.protierra.realestate)

[protierrapartners.com](https://www.protierrapartners.com)  
(322) 294.2040  
Av. Revolución #56  
Sayulita, Mexico 63734



# PROTIERRA PARTNERS NEIGHBORHOOD GUIDE



Sayulita



San Pancho  
(San Francisco)



Higuera Blanca



Punta De Mita  
(Punta Mita Resort)

## TECHNOLOGY / INFRASTRUCTURE

### WiFi

Excellent – 3 high-speed options  
w/ Starlink leading the pack.

### Water

Spotty in the summer months

### Electricity

Reliable

### Bank

Yes

### Medical

Six clinics

### Transportation

Bus or taxi to everywhere. Car  
rentals available.

### WiFi

Historically poor, changing w/  
Starlink

### Water

Spotty in the summer months

### Electricity

Reliable

### Bank

Yes

### Medical

Public hospital

### Transportation

Bus or taxi to everywhere

### WiFi

Excellent – 3 high-speed options  
w/ Starlink leading the pack.

### Water

Spotty in the summer months

### Electricity

Reliable

### Bank

Yes

### Medical

Clinic in nearby Litibu

### Transportation

Bus or taxi to everywhere

### WiFi

Excellent – 2 high-speed options  
– Telmex fiber optic and Starlink.

### Water

Consistent year around

### Electricity

Reliable

### Bank

Yes

### Medical

Region's best hospital.

### Transportation

Bus or taxi to everywhere. Car  
rentals available.



PROTIERRA  
PARTNERS



[protierra.realestate](https://www.protierra.realestate)

[protierrapartners.com](https://www.protierrapartners.com)

(322) 294.2040

Av. Revolución #56

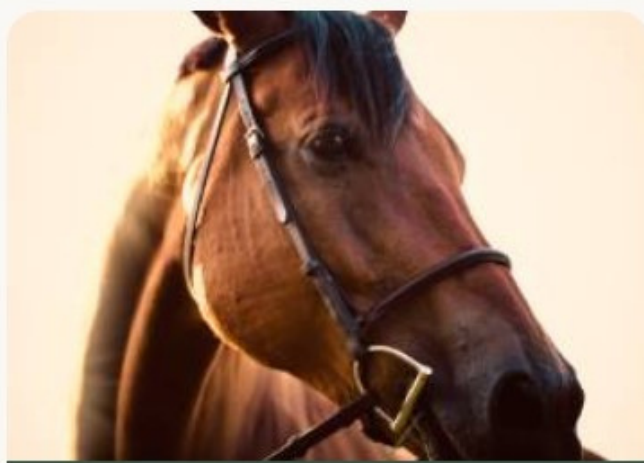
Sayulita, Mexico 63734



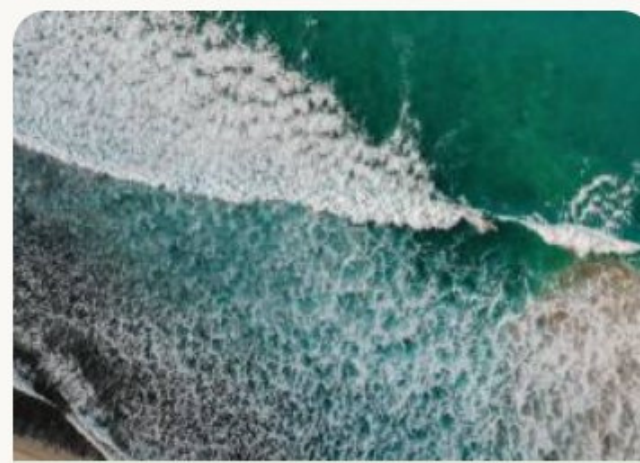
# PROTIERRA PARTNERS NEIGHBORHOOD GUIDE



Sayulita



San Pancho  
(San Francisco)



Higuera Blanca



Punta De Mita  
(Punta Mita Resort)

## LIKE MINDED RESIDENTS

### Best for

Fun loving, extroverted, very active, wants to experience Mexican culture. Seeking new friends and a strong sense of community

### Best for

Family orientated, laid-back, nature lover, wants to experience Mexican culture

### Best for

Family orientated, laid-back, nature lover, commuter to Sayulita or Punta de Mita, wants to experience Mexican culture.

### Best for

Appreciates luxury, concerned about privacy and safety, enjoys golf or tennis.

## NOT BEST SUITED FOR

### Not suited for

Those wanting a tranquil, laid-back, quiet lifestyle.

### Not suited for

Those who want to be part of a faster paced lifestyle with active nightlife

### Not suited for

Those who want many social options and an active nightlife.  
Those wanting to make new expat friends

### Not suited for

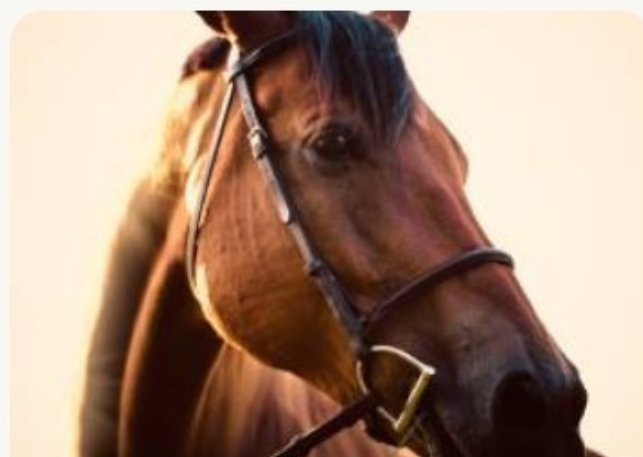
People on a moderate budget or who want live and experience a more Mexican lifestyle.



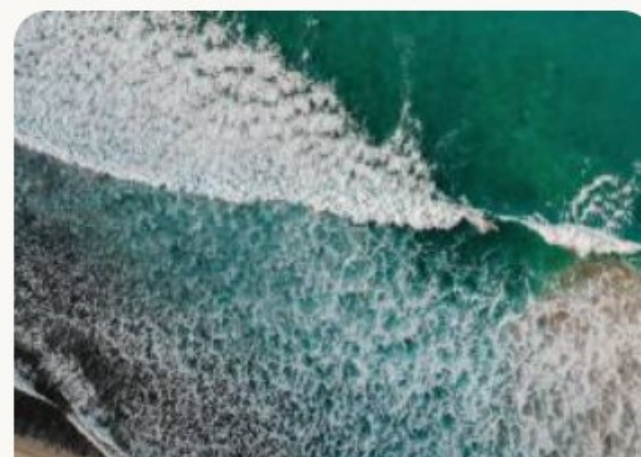
# PROTIERRA PARTNERS NEIGHBORHOOD GUIDE



Sayulita



San Pancho  
(San Francisco)



Higuera Blanca



Punta De Mita  
(Punta Mita Resort)

## AFFORDABILITY/COST OF LIVING

### Real estate

Wide range of pricing options

### Food

Moderate to expensive with many options

### Real estate

Wide range of pricing options

### Food

Moderate with many options

### Real estate

Inexpensive, fewer options

### Food

Inexpensive

### Real estate

Pueblo: inexpensive, many options; Punta Mita: very expensive.

### Food

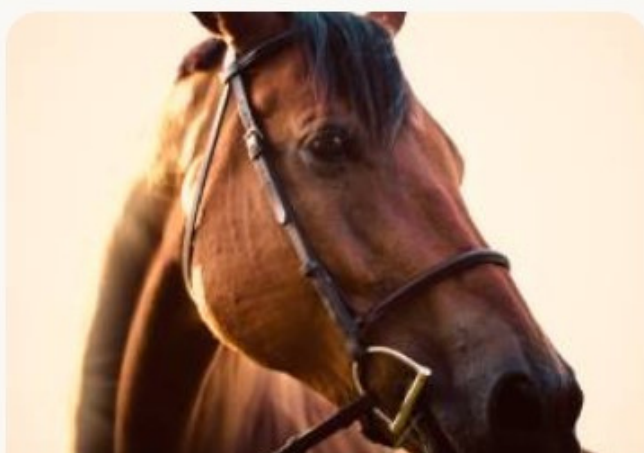
Expensive with many options



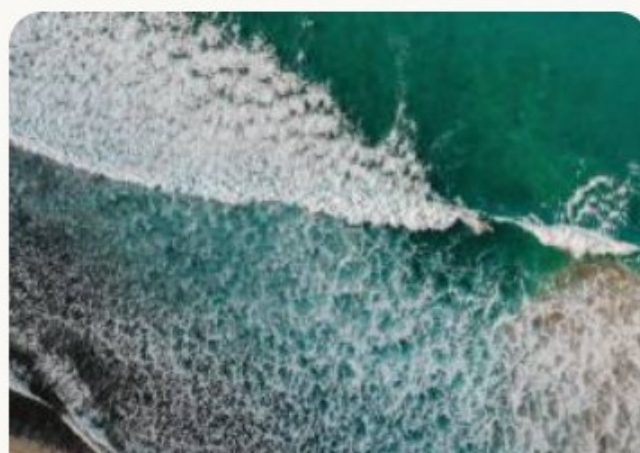
# PROTIERRA PARTNERS NEIGHBORHOOD GUIDE



Sayulita



San Pancho  
(San Francisco)



Higuera Blanca



Punta De Mita  
(Punta Mita Resort)

## SAFETY

Safe day and night

Safe day and night

Safe day and night

Safe day and night

## SCHOOLS

Good bilingual school through  
intermediate school

Several good bilingual schools  
through intermediate school

Public school only

Public school only